

NORTH SOMERSET COUNCIL

Green Infrastructure Strategy



Parks



Beaches



Green spaces



Countryside



Waterways



Wildlife



Our parks, beaches, green spaces, wildlife, countryside, public rights of way and waterways are precious, and we have prepared this new strategy to help to protect and enhance them.





Contents

What is Green Infrastructure?	5
Why do we need a strategy?	6
Aims, vision and objectives	8
Our green infrastructure	10
Green infrastructure opportunities	15
Action Plan	27

The information in this summary document has been drawn from a much wider piece of work that includes the data which underpins the maps shown in this summary; a more detailed analysis of North Somerset's GI; and wide ranging information about GI in general. It is the detailed report that will underpin the way the Council manages GI across North Somerset.

[View document >](#)



What is Green Infrastructure?

Green infrastructure is a technical term that we use as shorthand to describe how we will look after these spaces. We have adopted this definition below to help explain in more detail what we mean.

Green infrastructure is a strategically planned network of natural and semi-natural areas with other environmental features designed and managed to deliver a wide range of benefits (typically called ecosystem services) such as water purification, air quality, biodiversity, space for recreation and climate mitigation and adaptation.



This network of green (land) and blue (water) spaces can improve environmental conditions and therefore citizens' health and quality of life. It also supports a green economy, creates job opportunities and enhances biodiversity.



Why do we need a Green Infrastructure Strategy?

North Somerset Council has recognised how important the natural environment is for local residents, visitors and businesses through its vision of an open, fairer, greener North Somerset; and in actions such as the climate and nature emergency policies and the introduction of rewilding. COVID has also demonstrated how important our communities value open space. More widely a West of England Joint Green Infrastructure Strategy has been published and the government's Environment Bill is currently going through Parliament.



The purpose of the Strategy is therefore to help ensure that the agenda around green infrastructure is delivered effectively in North Somerset. The strategy will help to protect high quality and replace poorly performing GI, whilst enhancing other areas where possible within North Somerset, in order to maximise the multiple benefits (ecosystem services) that the natural environment provides.



These ecosystem services include pollination and food production, timber production, climate regulation, air and water quality regulation, flood protection, maintenance of biodiversity and space for recreation (to name a few). Ecosystem services are essential to the survival of humanity, and in tackling priorities such as the health and wellbeing of individuals and communities, and the nature and climate emergency.





GI provides the way to secure and maximise multiple benefits (ecosystem services) through a multi-functional, connected network of green space and features. The protection, provision and enhancement of GI is essential in meeting multiple national and local priorities and policy areas, including tackling the nature and climate emergency and health and wellbeing.

Agricultural management, climate change, hydrological change, urbanisation, pollution, woodland management and invasive non-native species are among the most significant of pressures acting upon land-based and freshwater wildlife. These pressures continue to cause the loss of biodiversity and degradation of ecosystems.

By protecting, reconnecting and enhancing green infrastructure, we can help ensure that a network of healthy ecosystems and semi-natural areas are able to flourish. It will also help ensure that ecosystems keep providing and supporting biodiversity and deliver their many vital services such as clean air and water, flood prevention, crop pollination, carbon storage, and improved health and well-being. This requires careful planning and coordinated action to achieve a balanced system of protection, sustainable use and management at local, regional, national and international levels.

Simply put, the protection, enhancement and provision of GI should ensure that green spaces are bigger, better and more joined up which will help us all address the Climate and Nature emergency in North Somerset.



Aim, Vision and Objectives

The overall aim of the Strategy is to protect and enhance the GI network within North Somerset, in order to maximise the multiple benefits (ecosystem services) that the natural environment delivers, which are essential to the survival and wellbeing of humanity, and also in helping to tackle the nature and climate emergency. It aims to raise awareness of the importance and multiple benefits of GI and sets out actions (within an Action Plan) that can be undertaken by the Council and partners to both protect and enhance GI.

We have summarised our plans into this vision:

By 2030 our green infrastructure will be: contributing to a carbon neutral community; biodiversity will have measurably increased; and health and wellbeing will be improved.

We have adopted the same eight objectives as the West of England in its joint GI strategy, to ensure an integrated approach across the region, which will help create better GI



In recognition of the wider benefits of an extended green infrastructure network these have been adopted as objectives for this strategy, and are as follows:

- 1. Improved and better-connected ecological networks:** protect, enhance and expand coherent, thriving and resilient ecological networks that deliver net gains in biodiversity and ecosystem services, including the creation of bigger, better, more and joined-up woodland, grassland and wetland habitats to achieve the ambitions of the West of England Nature Recovery Network.
- 2. Greater resilience to climate change:** Provide natural solutions to build resilience against the impacts of climate change including use of well-designed Green Infrastructure to stabilise slopes and attenuate flood water, absorb carbon, and increased use of trees to reduce urban heating.
- 3. Sustainable water management:** Optimise and improve the use of Green Infrastructure to deliver an improved water environment by working with natural processes to help reduce flood risk, manage drought, improve water quality and

improving connectivity to reduce the loss and quality of aquatic habitats and wildlife.

- 4. Health and wellbeing for all:** Improve the network of active travel routes and accessibility to green spaces to support healthy lifestyles and mental wellbeing, and provide more opportunities for people to connect with landscape and nature, and addressing inequalities in provision.
- 5. Create and maintain sustainable places:** New development which maximises the multiple benefits of Green Infrastructure in delivering resilient, healthy and environmentally friendly places and a net gain in natural capital by investing in Green Infrastructure for the long term.
- 6. Create and maintain valued healthy landscape:** Design and deliver high quality Green Infrastructure that improves local sense of place and protects and enhances landscape character and the natural, cultural and heritage services that they provide.

- 7. Support sustainable and local food production:** Increase opportunities for local food production in urban and rural areas and increase food sovereignty by, for example, protecting the best and most versatile agricultural land and enhancing our pollinator network.
- 8. Build a resilient economy:** Create attractive areas for investment and job creation and support the environmental resilience of economic sites by enhancing Green Infrastructure relating to housing, businesses and other associated infrastructure.



Our green infrastructure

Our Strategy identifies and maps the key strategic features and corridors within North Somerset and identifies opportunities for improving their connectivity and quality/ functionality, for both people and wildlife. It provides a joined-up approach with the other West of England local authorities (Bristol City, Bath and North East Somerset and South Gloucestershire) recognising that GI networks, including habitats and species, strategic access routes, and watercourses operate across boundaries, and at multiple scales.

We have identified and assessed GI using existing maps of local green infrastructure from a range of sources (e.g. the West of England Nature Partnership, Environment Agency, Natural England, Avon Wildlife Trust). The mapping has focused on areas of high quality (e.g. statutory and non-statutory designated sites) and connectivity (rivers, major footpaths/ cycleways, etc.).

This strategy will not be finalised until after an 8 week consultation period has enabled a range of views to be heard and considered and additional factual information provided.

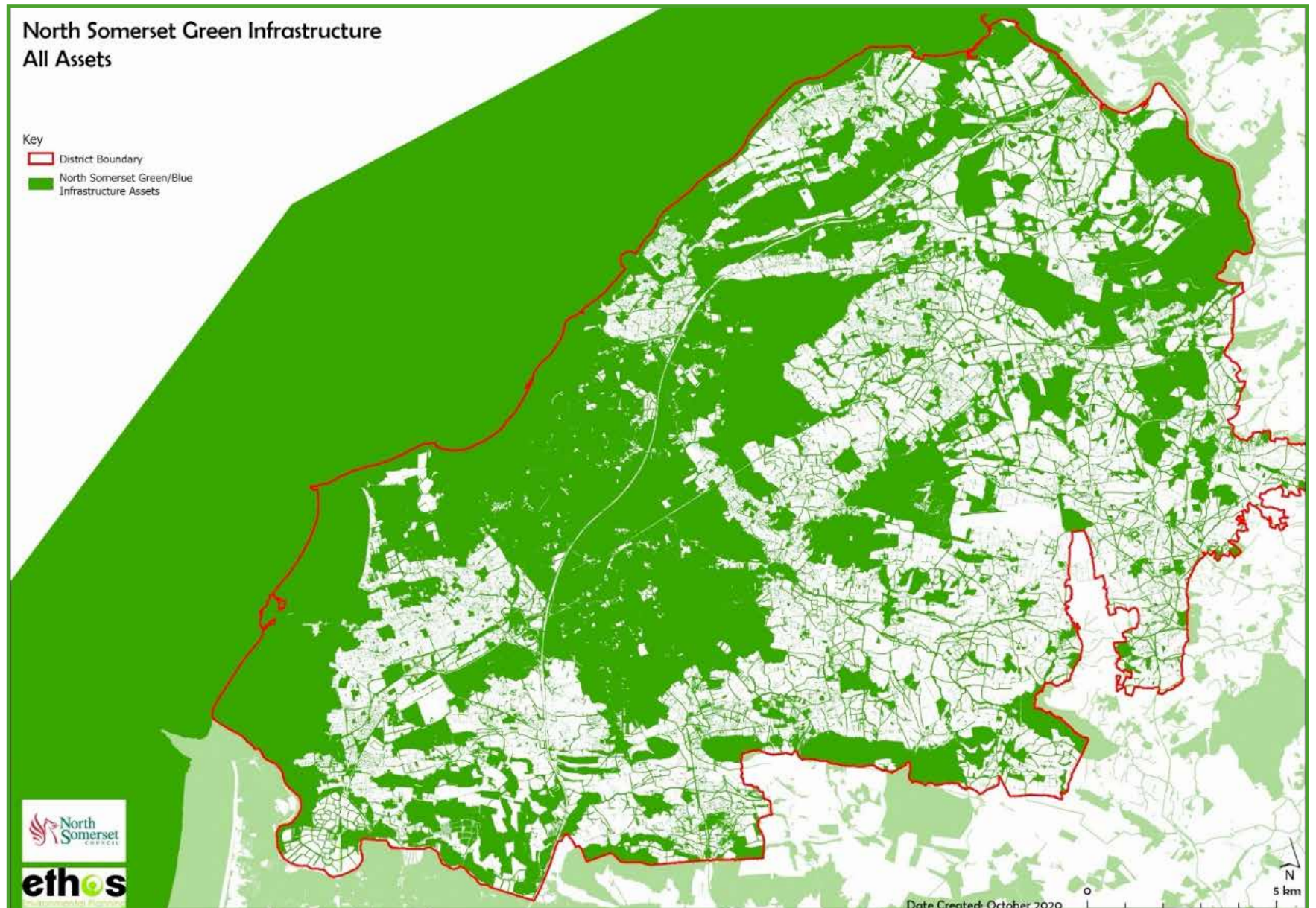
We have used this mapping to identify opportunities for improvement especially around the following:

- **Connectivity** – opportunities for addressing gaps in the network for both habitats for biodiversity/wildlife and access for people
- **Quality** – opportunities for quality improvements to enhance the GI network
- **Access** – an assessment of access to publicly accessible open space.

Figure 1 below provides an overview of all strategic GI assets within North Somerset demonstrating its significant role across the district.



Figure 1 - an overview of all GI assets in North Somerset



We have also used this data to create a map that identifies the key strategic corridors across North Somerset (identified in more detail in Table 1 and illustrated in Figure 2). These corridors are based on multifunctional uses which fulfil wildlife, access, flood plain and landscape functions. Opportunities for improving these networks have been identified in more detail below.

Both the GI corridors and opportunities for improving GI are indicative, and where they fall on private land, discussion around opportunities and partnerships would be sought. No action would be taken without first consulting with the landowner.

Further work is needed to identify specific projects, through more detailed analysis of the GI mapping and opportunities for improving habitat connectivity and management.

It should also be noted that there may be additional or more localised priorities, opportunities and aspirations for protecting, creating and enhancing GI outside of this strategic network e.g. through local community initiatives, where funding might have been secured for pond creation/restoration or tree planting, or through new development that falls outside of the strategic GI network. Any new GI or enhancements should link with the strategic GI network where possible.

Table 1 Strategic GI corridors in North Somerset

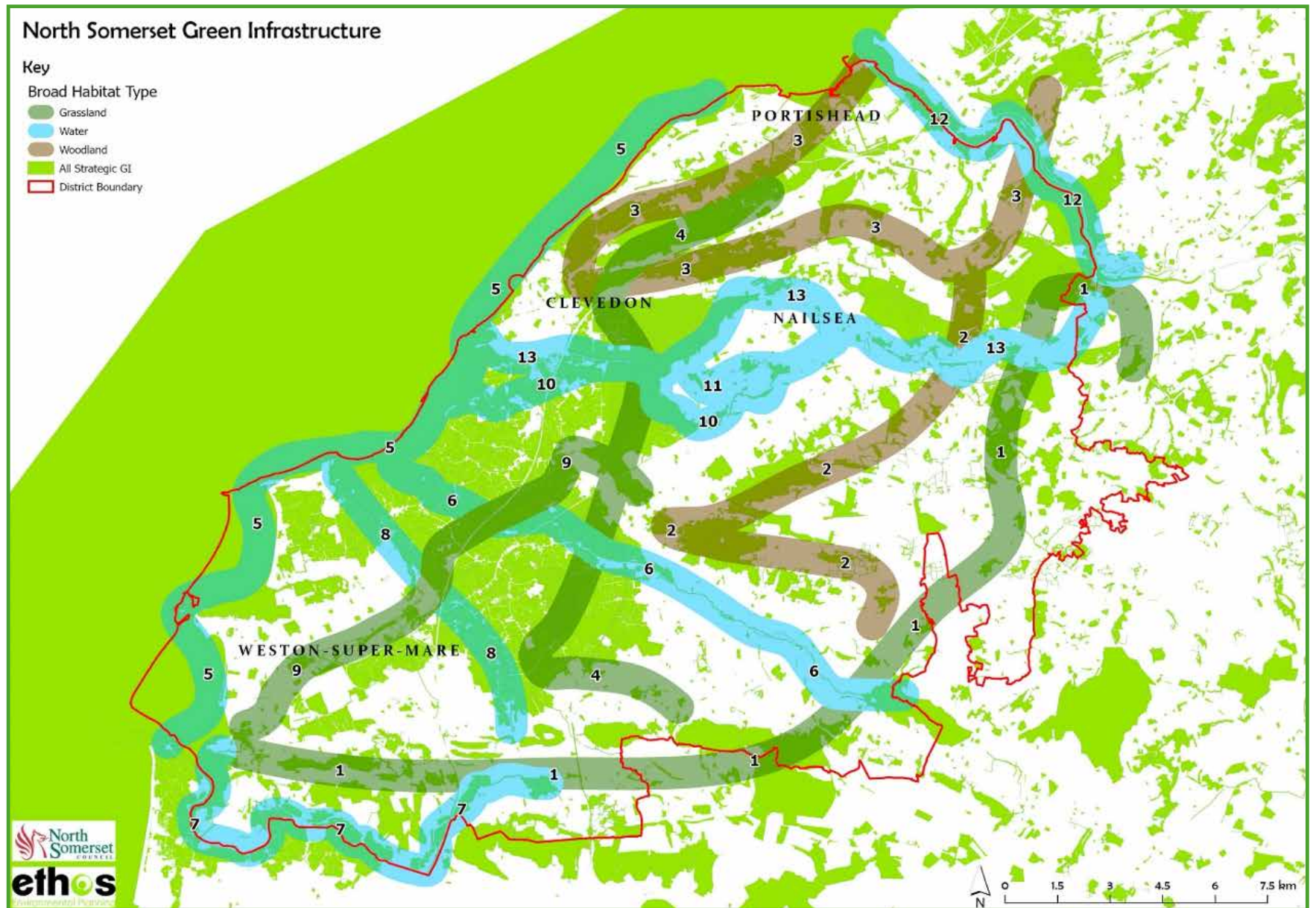
Strategic corridor number	Description
1	Key Corridor following B-Line (pollinator network project https://www.buglife.org.uk/projects/west-of-england-b-lines/) along the south and east of the district, the southern section falling within the Mendip Hills Area of Outstanding Natural Beauty (AONB), from Manor Woods Valley Local Nature Reserve (LNR) in Bristol through to Mendip Limestone Grasslands Site of Special Scientific Interest (SSSI) via Barrow Tanks Local Wildlife Site (LWS) and Burrington Combe SSSI. This corridor picks up a number of connectivity opportunities across all typologies as identified within the Nature Recovery Network (NRN).
2	Woodland corridor following the North Somerset & Mendip Bats Special Area of Conservation (SAC), Cadbury Hill, a number of woodland connectivity opportunities and Goblin Combe before finishing at the Ashton Plantation and Failand in the north.



Strategic corridor number	Description
3	Corridor linking a number of LWS starting with the Severn Estuary through Portbury Wharf, Gordano Valley and Walton Common before looping back through Clevedon Court, Twickenham Hill/Cadbury Camp and Failand Ridge and ending at the River Avon. This corridor contains a mixture of woodland, wetland and grassland.
4	Floodplain grazing marsh corridor starting in the B-Line to the south and a number of traditional orchards in Churchill, passing through a grassland connectivity opportunity and taking in the key moors before finishing in the orchards of Tickenham.
5	Severn Estuary Corridor covering the coastal stretch of the district.
6	Congresbury Yeo Corridor following NRN's strategic wetland network from Severn Estuary to Blagdon Lake SSSI, passing a number of traditional orchards. The corridor is primarily coastal floodplain grazing marsh west of Congresbury village and grassland and deciduous woodland east of the village. This corridor takes in a number of wetland connectivity opportunities as identified in the NRN analysis.
7	River Axe and Lox Yeo River Corridor within B-Line. Originating at Uphill LNR and finishing at Max Bog SSSI.
8	River Banwell Corridor linking Banwell Wood (which includes North Somerset & Mendip SAC) in the east to Severn Estuary. This follows the NRN's strategic wetland network.
9	Corridor following Uphill Great Rhyne to the west via public open spaces and orchards in Locking Castle to the Rhynes at Tickenham, Nailsea and Kenn Moors SSSI.
10	Predominantly wetland corridor following NRN's strategic wetland network linking Severn Estuary through floodplain grazing marsh through Nailsea and Tickenham Moors and taking in some traditional orchards.
11	Corridor connecting Tickenham, Nailsea and Kenn Moors to Bucklands Pool/Backwell Lake LNR via traditional orchards and grassland LWS.
12	River Avon Corridor following strategic wetland from the NRN in addition to woodland and following a B-Line. This important corridor contains the Avon Gorge SSSI and Leigh Woods LWS.
13	Land Yeo river Corridor starting in the B-Line to the East at Ashton Vale and following the Land Yeo and Blind Yeo to the Severn; both of these rivers have a number of wetland connectivity opportunity spots.



Figure 2 –
key strategic
corridors
in North
Somerset



GI OPPORTUNITIES

The following Tables and Maps set out some specific opportunities for improving the connectivity and quality of GI.

The opportunities set out below provide a starting point for further discussion and development with project partners, and they are not exhaustive especially because new projects and opportunities will arise. It is our intention to work with partners to deliver enhanced GI at every opportunity.

These opportunities have been categorised into the following themes:

- Water
- Biodiversity and habitats
- Open space and access routes.



The following six areas of opportunity have been identified:

- Figure 3 - Water opportunities
- Figure 4 - Environment Agency working with nature processes
- Figure 5 - Woodland opportunities
- Figure 6 - Grassland opportunities
- Figure 7 - Strategic access routes opportunities
- Figure 8 - Access to open space

Water opportunities

Table 2 and Figure 3 below highlight specific issues and opportunities for improving blue GI, as well as existing projects, drawing on various sources including: existing Bristol Avon Catchment Partnership (BACP) projects, Water Framework Directive water quality data, the Nature Recovery Network (NRN) and Environment Agency WWNP (Riparian Woodland Potential and Floodplain Woodland Planting Potential). Figure 4 illustrates opportunities for riparian and floodplain tree planting potential.



Table 2 - opportunities for improving areas dominated by water

Number on map (Figure 1)	Opportunity
1	Improve Gordano Valley SSSI. 35.30% in favourable condition. (Parts of it have been assessed as being unfavourable (61.18% recovering, 1.61% no change and 1.91% declining) – overlaps with grassland opportunities
2	Improve Tickenham, Nailsea and Kenn Moors SSSI. (Parts of it have been assessed as being in unfavourable condition (7.91%recovering, 27% no change and 1.21% declining). 68.88% in favourable condition)
3	Improve Biddle Street SSSI (Only 16.42% in favourable condition. 55.53% in unfavourable recovering, and 28.04% in unfavourable declining) - overlaps with grassland opportunities
4	Improve quality of Puxton Moor SSSI. Overall in favourable condition. (Parts have been assessed as being in unfavourable declining condition (6.11%). 93.89% in favourable condition) - overlaps with grassland opportunities
5	<p>North Somerset Levels and Moors Partnership Project (Ongoing)</p> <p>BACP Project: Working with landowners to improve habitat management for wildlife and to promote soil management to help mitigate flooding, improve water quality and increase habitat for wetland birds.</p>
6	<p>Nailsea Multi-functional Constructed Wetland (Ongoing)</p> <p>BACP Project: A partnership led project to provide detailed design to identify how a multifunctional wetland can be implemented. This will build on work that has previously been delivered in stage 1 of the scoping process.</p>
7	<p>Bristol Water River Congresbury Yeo Project (Ongoing)</p> <p>BACP Project to assess the impacts of the reservoir on the rivers downstream in terms of Water Framework Directive (WFD). Trials of options to mitigate impacts will be delivered.</p>



Number on map (Figure 1)	Opportunity
8	<p>Bristol Water River Congresbury Yeo Project (Ongoing)</p> <p>BACP Project: This project will assess the impacts of the reservoir on the rivers downstream in terms of Water Framework Directive (WFD). Trials of options to mitigate impacts will be delivered.</p>
9	<p>Parts of Severn Estuary SSSI in unfavourable Condition (However, 92.69% in favourable condition).</p>
10	<p>Mendip Lakes Partnership (Ongoing)</p> <p>BACP Project: Working with farmers across the Blagdon and Chew Reservoir catchments to improve water quality and enhance habitats.</p>
11	<p>NSC Summer Lane Ponds Flood Relief Scheme. To reduce the risk of flooding in Locking Castle with improvements to the Summer Lane ponds and surrounding ditches. Funding has come from the Environment Agency, the Regional Flood and Coastal Committee, North Somerset Council and Wessex Water. Delayed due to COVID 19.</p>



Figure 3 - opportunities for improvements relating to areas dominated by water

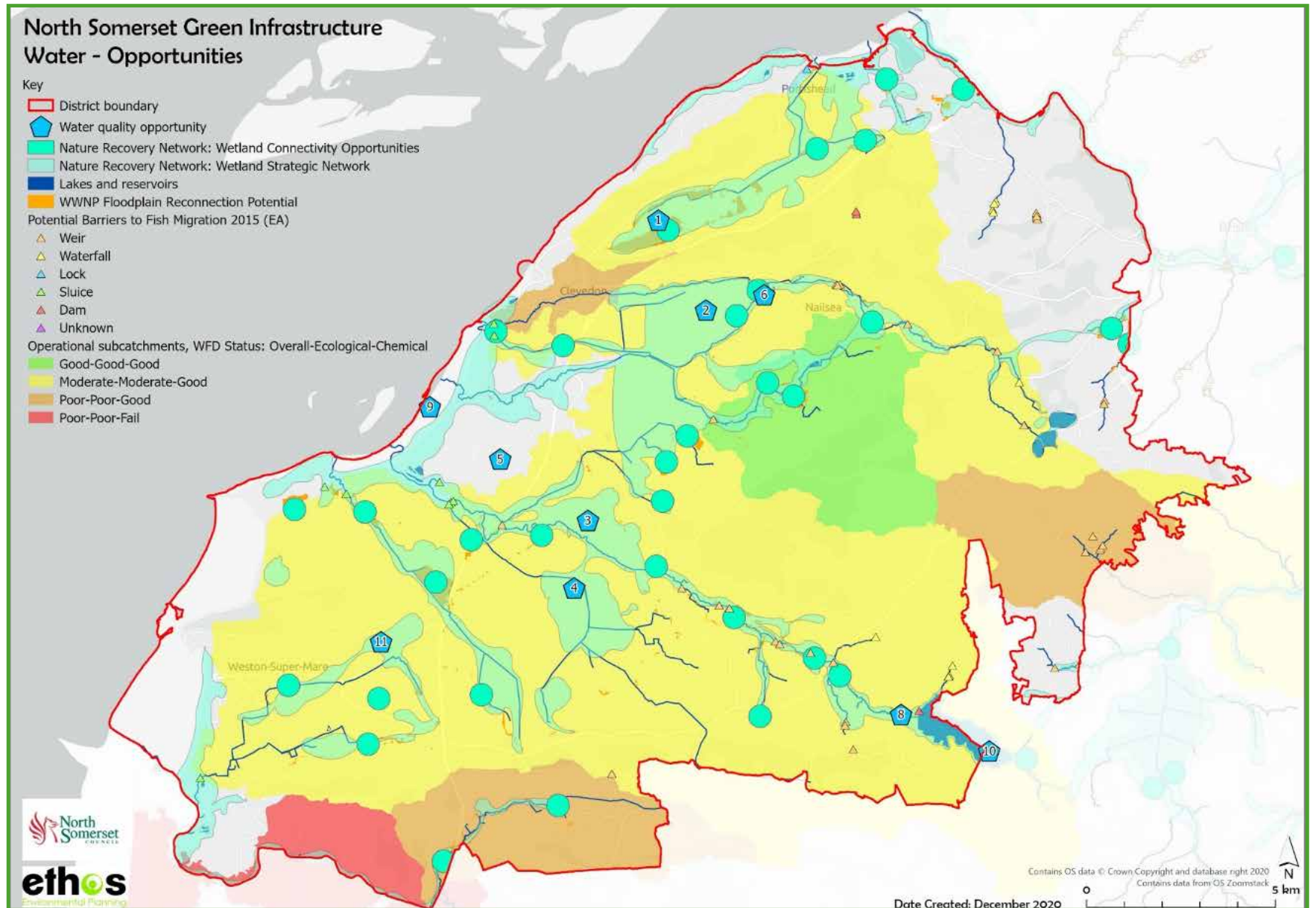
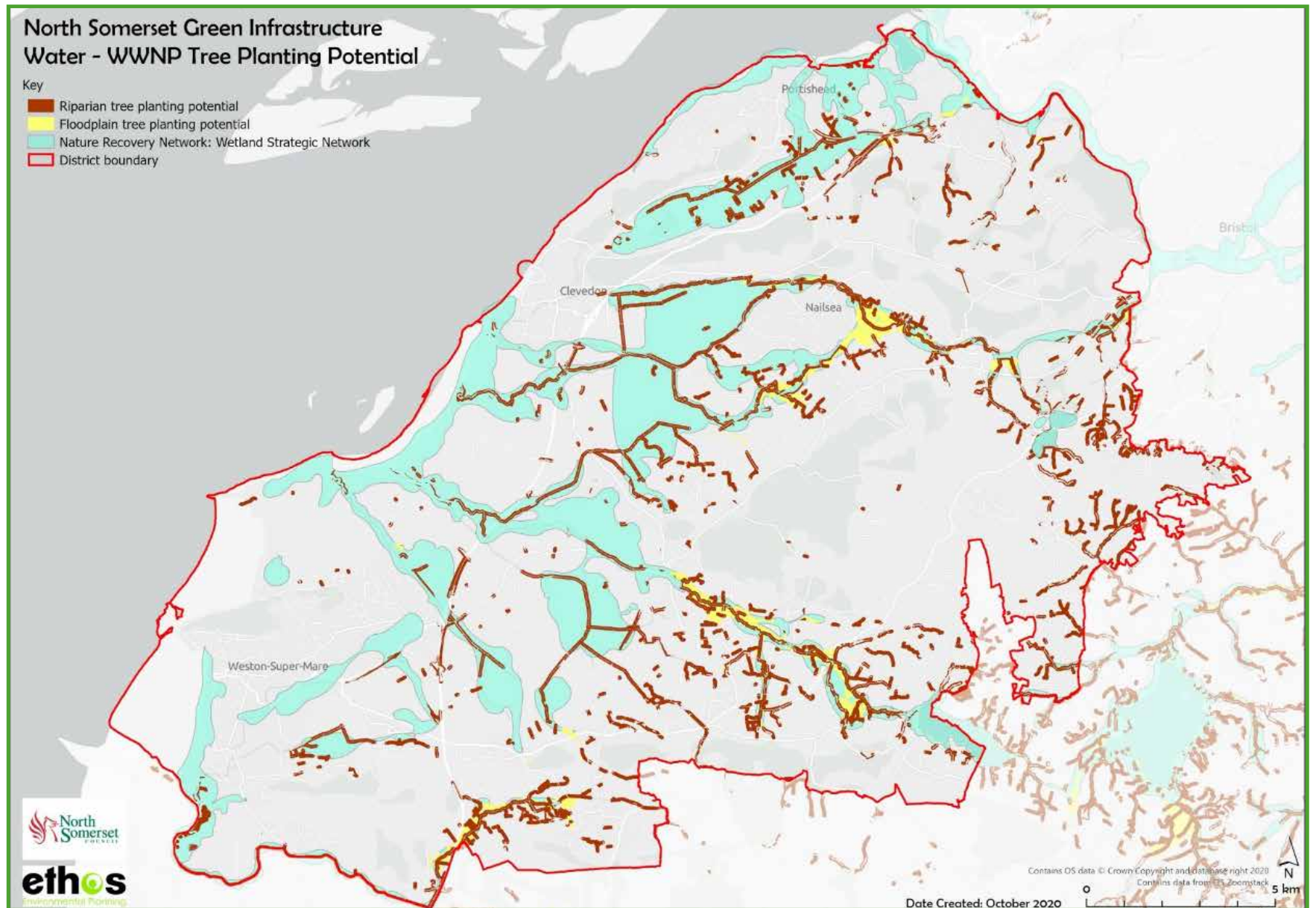


Figure 4 - Working With Natural Processes (riparian tree planting potential and floodplain tree planting potential)

Riparian means relating to, or living, or located on the bank of a watercourse



Woodland opportunities

Table 3 and Table 4 and Figure 5 below highlight some specific opportunities for improving the connectivity and quality of woodland habitat. This draws on various sources including SSSI condition assessment, NRN data (which utilised the Natural England Habitat Natural England Habitat Network dataset), as well as dormouse records.

Table 3 - opportunities for improving woodland connectivity

Arrow Label	Opportunity
1	Connect fragmented woodland areas to create corridor of woodland, which will link 2 large networks. Will link three Ancient woodlands: Fullers Hay (south), Hanging Wood (middle) and Scars/Lye Wood (north). Arrow passes through 2 West of England Nature Partnership (WENP) Opportunities. Soil wash: runoff seen most years in this area.
2	Connect several areas of ancient woodland, west to east: Buddings Wood, Hails Wood, Leigh Wood/Markham Bottom, Old Park Wood/Vowles Bottom, and Leigh Wood/ Oak Wood. Soil wash: runoff seen most years in this area.
3	Connect two large areas of ancient woodland; Buddings Wood and Parsonage/Dunhill/Chummock Woods.
4	Link fragmented ancient woodlands; Bourton Combe, Breach Hill Wood, Crossgrove Wood and Barrow Wood,
5	Connect small fragmented woodlands between two areas of ancient woodland: Chelvey Wood and Bourton Combe. Avoiding Quarry in middle. Soil Wash seen most years.
6	Connect fragmented ancient woodland areas (Simshill, Prestow/Shippenhays Woods, Whitley Coppice/Tuckers Grove, Little Horts and Horts Wood to create corridor of woodland, which will link 2 large networks.
7	Riparian planting potential. Could link three areas of woodland together. Soil Wash: run off seen most years.
8	Failand Ridge Woodlands; connection opportunities.
9	Failand Ridge Woodlands; connection opportunities.
10	Failand Ridge Woodlands; connection opportunities.

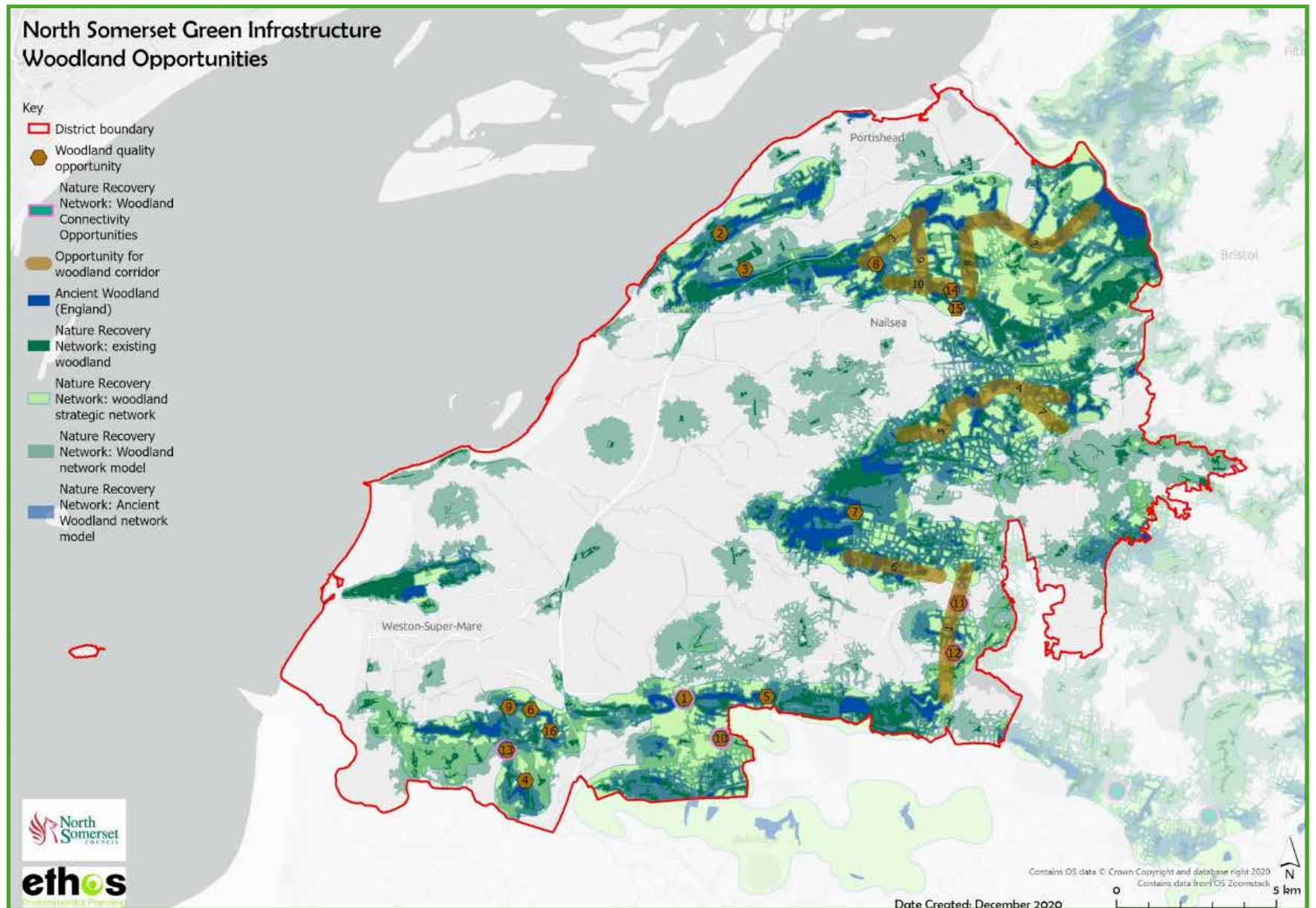


Point/ Number	Opportunity
1	Connect two ancient woodlands. Riparian woodland potential. WENP have identified as opportunity.
2	Improve condition of Walton Common SSSI (Condition is 'Unfavourable Declining' and more than half the site is Broadleaved Woodland).
3	Improve condition of Gordano Valley SSSI (Current condition is 'Unfavourable Declining' and half of the site is Broadleaved Woodland).
4	Improve condition of SSSI woodland to create better link between SSSI and ancient woodland
5	Connect Knowle Wood with Dolebury Warren. This will link Ancient woodland with SSSI woodland. Land is currently grazed fields/hedgerow.
6	Connect Elborough Wood to Benthills Woods (ancient woodlands)
7	Create wider connecting woodland between two SSSI woodlands . Current connecting woodland is narrow because grazed field in middle. Soil wash: run off most years.
8	Link two large ancient Woodlands
9	Create continuous link between ancient woodland (land is currently grazed fields)
10	WENP Opportunity with Riparian planting potential
11	WENP NRN Woodland Connectivity Opportunity
12	WENP NRN Woodland Connectivity Opportunity
13	WENP NRN Woodland Connectivity Opportunity
14	Opportunity to connect two large areas of Broadleaved woodland: Tyntesfield Plantation and Truckle Wood
15	Opportunity to connect two large areas of Broadleaved woodland: Tyntesfield Plantation and Truckle Wood
16	Link Benthills Wood and Ancient woodland to the south. Land is currently arable.

Table 4 - opportunities for improving woodland quality



Figure 5 -
Woodland
Opportunities



Grassland opportunities

Table 5 and Figure 6 below highlight some specific opportunities for improving the connectivity and quality of grassland habitat, drawing on various sources including SSSI condition assessment, NRN data (which utilised the Natural England Habitat Network mapping) and the strategic GI corridors developed as part of this strategy.

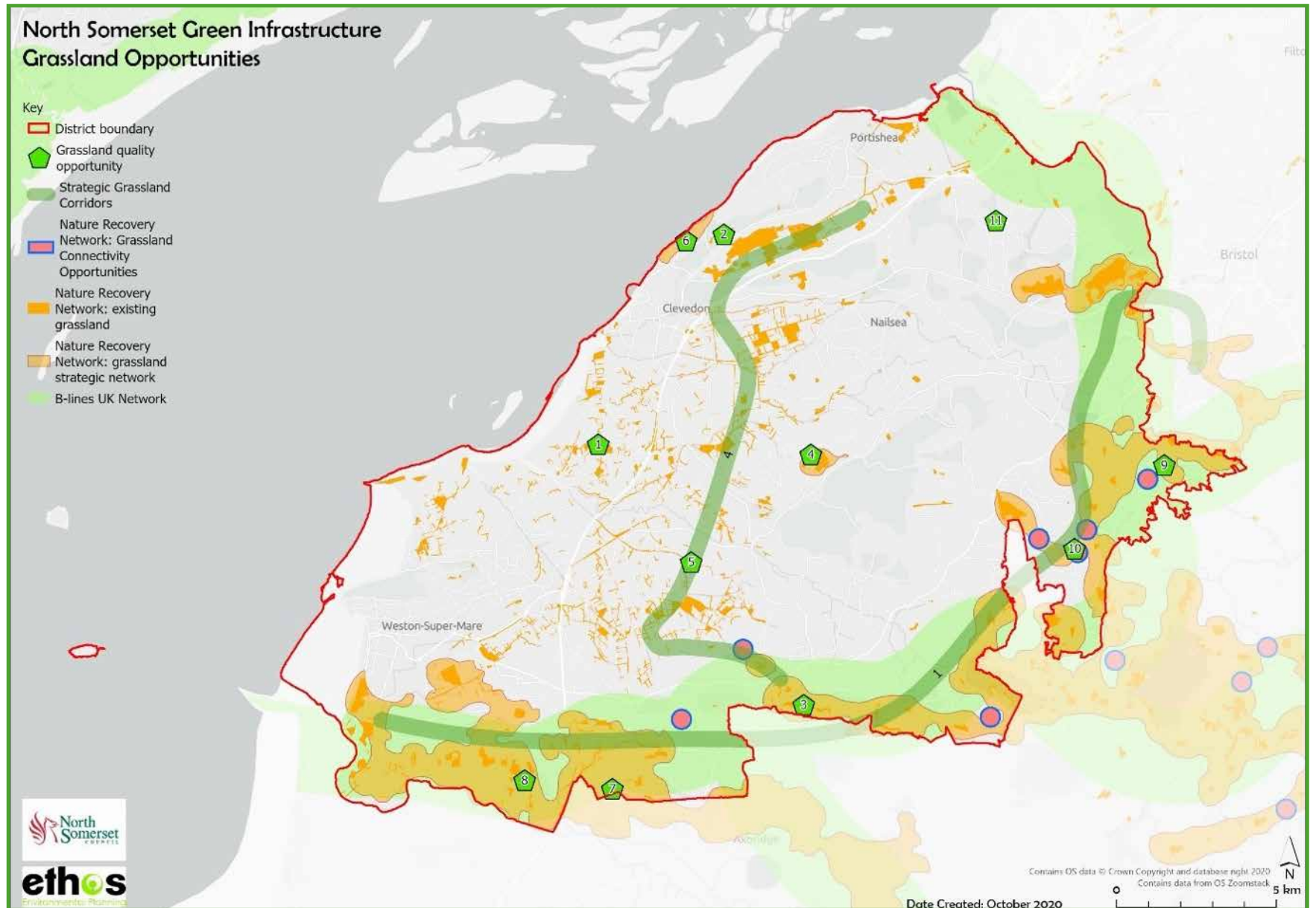
Table 5 - opportunities for improving grassland

Number	Opportunity
1	Opportunity to improve connectivity of grassland and traditional orchards (North Somerset Levels and Moor Partnership)
2	Improve Walton Common (calcareous grassland SSSI). 100% unfavourable - declining
3	Improve Dolebury Warren, Avon Wildlife Trust Site. 91% unfavourable - recovering
4	This field and the LWS adjoining are identified by Natural England as sites for Habitat Restoration and Creation
5	Priority habitat around this point identified by Natural England as sites for Habitat Creation/Restoration
6	This strip identified by Natural England as area for Habitat Creation/Restoration
7	Key site as part of Crook Peak Nature Reserve/SSSI.
8	Core Grassland but SSSI (Shiplait Slait) is unfavourable declining
9	Habitat Restoration/Creation identified near existing Lowland Calcareous Grassland.
10	Key connectivity potential identified by NRN linking lowland dry acid grassland adjacent to the airport through existing grassland to assets at Winford.
11	Identified as suitable for habitat creation/restoration by Natural England, next to lowland dry acid grassland.

Figure 6 - Grassland Opportunities



Open space and access



opportunities

When looking at accessible open space across the district (see Figure 7 below), there appears to be good access to open space in general. However, it is recommended that an update open space assessment is undertaken in order to review the provision of open space, particularly in terms of the specific typologies of open space e.g. parks, amenity green space, natural green space, play space, allotments etc. and associated standards for quantity, access and quality.

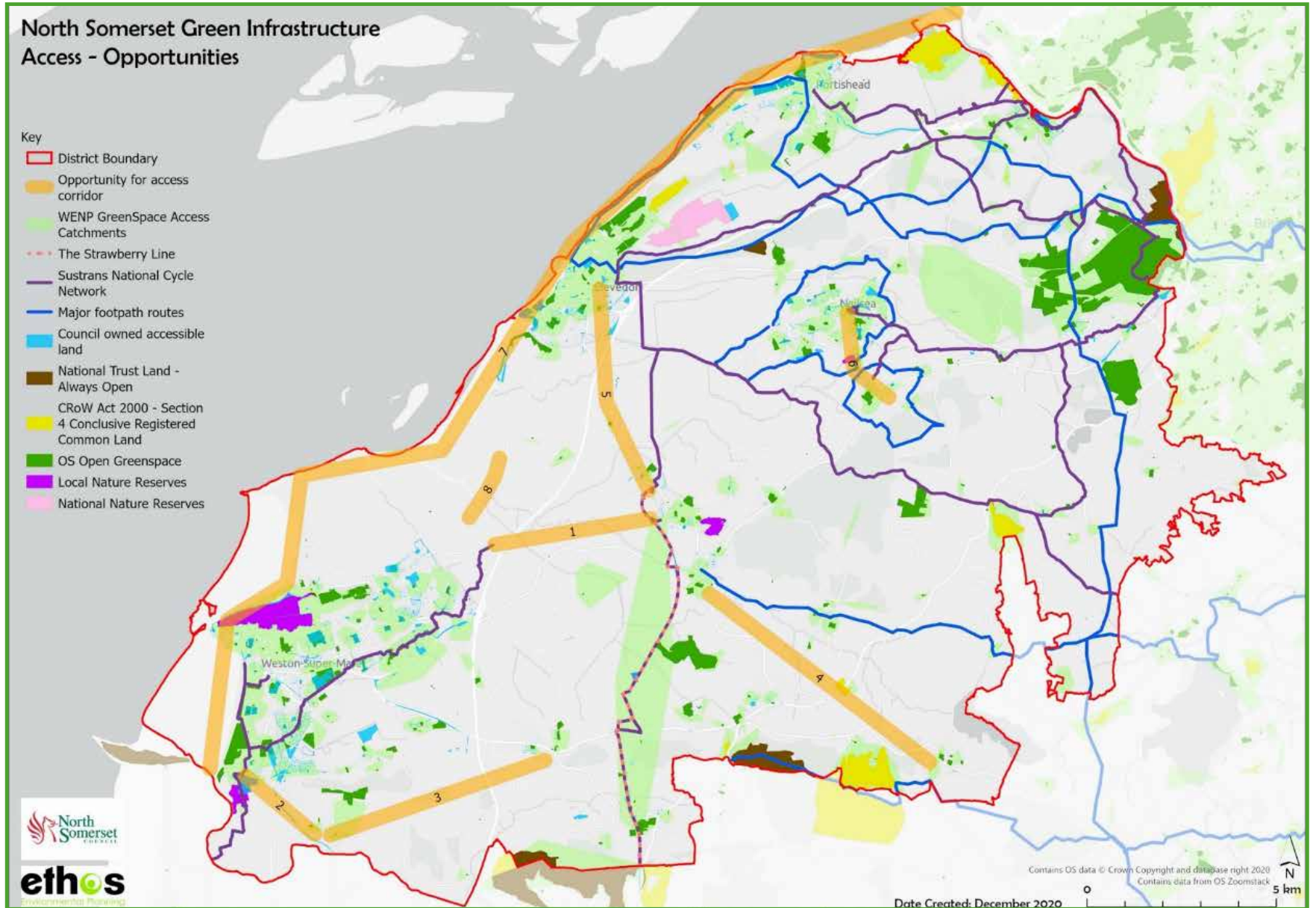
Opportunities to improve key strategic access routes have been identified through the policy and strategy review and are summarised in Table 6 and Figure 8 below.

Table 6 - open space and access opportunities

Arrow number	Opportunities
1	Improve connection between Weston and the northern towns. Opportunity to connect two national cycle routes.
2	Increase access between Weston and Bleadon
3	Increase access from Bleadon to Banwell
4	Use Wrington light railway to create a multi-user route
5	Extend Strawberry Line to Clevedon
6	Increase access between Nailsea and Backwell. Lack of cycling and walking routes. Connectivity should include the railway station.
7	Development of England Coastal Path - currently being determined by Secretary of State. Will run from River Avon at Avonmouth to River Axe at Brean Down.
8	Tuthill Sluice Cycle Route.



Figure 7 - potential to improve strategic access routes





Action Plan

This action plan covers strategic short-term, medium-term and long-term actions in order to deliver the vision, aims and objectives of the strategy. The Action Plan is a live document which will be reviewed annually and updated in the meantime as plans and projects progress.

Each action is linked to a GI theme and objective, and identifies the lead organisation, partners, targets, timescales and funding source.

Both the GI corridors and opportunities for improving GI are indicative, and where they fall on private land, discussion around opportunities and partnerships would be sought. No action would be taken without first consulting with the landowner.

Indicative time scales for projection completion have been included based on the following timeframes:

- **Short term** – to be completed by 2024
- **Medium term** – to be completed by 2027
- **Long term** – to be completed by 2031
- **Ongoing** – some areas of work will be continuing throughout the period of the strategy

This timeframe may alter because actions will be prioritised after the consultation stage. This is because it is possible that new ideas are introduced, or existing proposals amended in some way.



Ref	Project name	Project summary	Main Objective	Main focus	Theme	Lead	Funding source	Lead Team	Timescale
1	Rewilding - tree planting to 2022	Deliver Council motion to rewild as much of North Somerset Council land as possible	Greater resilience to climate change	Council land	Biodiversity	North Somerset Council	Existing revenue budget and donations from the Woodland Trust	Tree Team	Short term
2	Rewilding - creating tall grass to 2021	Deliver Council motion to rewild as much of North Somerset Council land as possible	Improved and better-connected ecological networks	Council land	Biodiversity	North Somerset Council	Existing revenue budget	Tree Team	Short term
3	Rewilding - expansion	Consider further areas of council land for re-wilding/ management for biodiversity – manage 30% land for biodiversity by 2030 (In accordance with the government commitment).	Improved and better-connected ecological networks	Third party land	Biodiversity	North Somerset Council	Grant funding will be required	Parks Team	Long term
4	Ash dieback action plan	Create a plan that details how we will manage ash dieback including the development of a comms plan	Health and wellbeing for all	Council land	Open space	North Somerset Council	Budget growth required	Tree Team	Short term



Ref	Project name	Project summary	Main Objective	Main focus	Theme	Lead	Funding source	Lead Team	Timescale
5	Rewilding champions lottery project	Lottery funded project in partnership with Avon Wildlife Trust to develop volunteering opportunities to support rewilding and to measure biodiversity changes	Improved and better-connected ecological networks	Council land	Biodiversity	North Somerset Council	National Lottery	Natural Environment Team	Short term
6	Nature recovery network development	To develop more detailed analysis of these corridors to ensure focus is on the most important corridors.	Improved and better-connected ecological networks	Third party land	Biodiversity	North Somerset Council	Existing revenue budget	Parks Team	Medium term
7	Strawberry Line Extension	The establishment of a Bridleway from Yatton Station through Kenn to the outskirts of Clevedon	Health and wellbeing for all	Third party land	Access	North Somerset Council	S106, Sustainable Transport	PROW Team	Medium term
8	England Coast Path development	The establishment of a National Trail from Aust to Brean (Avonmouth to Uphill being in North Somerset)	Health and wellbeing for all	Third party land	Access	Natural England/ NSC	England Coastal Path Establishment Fund (EU Funding)	PROW Team	Medium term



Ref	Project name	Project summary	Main Objective	Main focus	Theme	Lead	Funding source	Lead Team	Timescale
9	Ensure planning policy is up to date with GI thinking and approach	Review and update GI planning policy to ensure that a resilient and healthy GI network is protected and enhanced	Create and maintain sustainable places	Planning policy	Biodiversity	North Somerset Council	Existing revenue budget	Natural Environment Team	Short term
10	Local Plan SPD - trees	Develop a SPD for trees to add relevant detail to the policies in the Local Plan. This will provide further guidance for development on specific sites and, or, on particular issues, such as design.	Create and maintain sustainable places	Planning policy	Biodiversity	North Somerset Council	Existing revenue budget	Tree Team	Short term
11	Local Plan SPD - biodiversity	Develop a SPD for biodiversity to add relevant detail to the policies in the Local Plan. This will provide further guidance for development on specific sites and, or, on particular issues, such as design.	Create and maintain sustainable places	Planning policy	Biodiversity	North Somerset Council	Existing revenue budget	Parks Team	Short term



Ref	Project name	Project summary	Main Objective	Main focus	Theme	Lead	Funding source	Lead Team	Timescale
12	Local Plan SPD - access	Develop a SPD for access to add relevant detail to the policies in the Local Plan. This will provide further guidance for development on specific sites and, or, on particular issues, such as design.	Create and maintain sustainable places	Planning policy	Access	North Somerset Council	Existing revenue budget	PROW Team	Short term
13	Local Plan SPD - open space standards	Develop a SPD for open space standards to add relevant detail to the policies in the Local Plan. This will provide further guidance for development on specific sites and, or, on particular issues, such as design.	Create and maintain sustainable places	Planning policy	Biodiversity	North Somerset Council	Existing revenue budget	Parks Team	Short term
14	Local Plan SPD - Suitable Alternative Natural Greenspace (SANGS)	Develop a SPD for SANGs to add relevant detail to the policies in the Local Plan. This will provide further guidance for development on specific sites and, or, on particular issues, such as design.	Create and maintain sustainable places	Planning policy	Biodiversity	North Somerset Council	Existing revenue budget	Parks Team	Short term



Ref	Project name	Project summary	Main Objective	Main focus	Theme	Lead	Funding source	Lead Team	Timescale
15	Local Plan SPD - bats	Develop a SPD for European protected bat species to add relevant detail to the policies in the Local Plan. This will provide further guidance for development on specific sites and, or, on particular issues, such as design.	Create and maintain sustainable places	Planning policy	Biodiversity	North Somerset Council	Existing revenue budget	Parks Team	Short term
16	Local Plan SPD - biodiversity net gain	Develop a SPD for biodiversity net gain to add relevant detail to the policies in the Local Plan. This will provide further guidance for development on specific sites and, or, on particular issues, such as design.	Create and maintain sustainable places	Planning policy	Biodiversity	North Somerset Council	Existing revenue budget	Parks Team	Short term
17	Horseshoe bat data collection	Carry out a survey of horseshoe bats to identify key habitat for foraging and implement appropriate protection measures		Planning policy		North Somerset Council	Existing revenue budget	Parks Team	Short term



Ref	Project name	Project summary	Main Objective	Main focus	Theme	Lead	Funding source	Lead Team	Timescale
18	Citizen science project (bats) with University of the West of England (UWE)	To work in partnership with UWE to enable the public to use our static bat detection equipment to collect bat data that will be used to continually update our knowledge, ensuring our policies remain relevant in terms of Planning and other purposes.	Create and maintain sustainable places	Planning policy	Biodiversity	North Somerset Council	UWE	Parks Team	Medium term
19	Rights of Way Improvement Plan No 2	Revision of current version of ROWIP to identify issues which are important to our users and the network, to then prioritise and implement where possible within the next 10 years	Health and wellbeing for all	Third party land	Access	North Somerset Council	Existing revenue budget, funding from Parish Council, S106 funding	PROW Team	Short term
20	Grounds maintenance contract	The current contract expires in June 2021 so it is necessary to prepare for future delivery; particularly ensuring it will be able to deliver rewilding objectives; and achieve carbon neutrality by 2030	Health and wellbeing for all	Council land	Open space	North Somerset Council	Existing revenue budget	Natural Environment Team	Short term



Ref	Project name	Project summary	Main Objective	Main focus	Theme	Lead	Funding source	Lead Team	Timescale
21	Banwell bypass - GI	Work with bypass project team to support delivery of GI objectives	Health and wellbeing for all	Third party land	Biodiversity	North Somerset Council	HIF	Parks Team	Long term
22	District licencing for newts	Work with Natural England to support roll out of this scheme in North Somerset and then take on the licencing responsibility when permitted.	Health and wellbeing for all	Third party land	Biodiversity	North Somerset Council	Income from the licencing scheme	Parks Team	Medium term
23	DEFRA Resilience and Innovation	Apply to the programme to seek fully funded grant to deliver flood risk reduction projects across North Somerset	Health and wellbeing for all	Third party land	Water	North Somerset Council	DEFRA fully funded project	Natural Environment Team	Short term
24	Worlebury hillfort lottery project	Make an application to the lottery to fund activities to protect the hillfort for future generations.	Create and maintain valued healthy landscape	Council land	Open space	North Somerset Council	National Lottery	Natural Environment Team	Medium term
25	Street tree planting programme	Explore opportunities to increase street tree planting working with the Forest of Avon Trust 'Trees for Climate' programme	Health and wellbeing for all	Council land	Open space	North Somerset Council	Trees for Climate fund	Tree Team	Medium term



Ref	Project name	Project summary	Main Objective	Main focus	Theme	Lead	Funding source	Lead Team	Timescale
26	Victorian sea defences investigation	Develop a programme to investigate the condition of the Victorian sea defences in Weston super Mare and Clevedon	Greater resilience to climate change	Council land	Water	North Somerset Council	Environment Agency grant funding	Flood Risk Team	Long term
27	Beach sand recycling grant application, Weston super Mare	Make an application to the Environment Agency for funding to redistribute the sand that is moved by the tide	Greater resilience to climate change	Council land	Water	North Somerset Council	Environment Agency grant funding	Flood Risk Team	Short term
28	Nailsea outfall partnership project	Continue working with partners seeking funding to deliver this water quality improvement project on the moors between Nailsea and Tickenham	Create and maintain valued healthy landscape	Third party land	Access	North Somerset Council	Grant funding will be required	Parks Team	Long term
29	North Somerset Levels and Moors partnership project	Working with partners to restore wetland to lock up more carbon and enhance biodiversity	Improved and better-connected ecological networks	Third party land	Biodiversity	North Somerset Council	Grant funding will be required	Natural Environment Team	Long term



Ref	Project name	Project summary	Main Objective	Main focus	Theme	Lead	Funding source	Lead Team	Timescale
30	Partnership working	Continue to work collaboratively with both local and regional partners in securing and enhancing GI within North Somerset and beyond	Create and maintain sustainable places	Third party land	Access	North Somerset Council	Existing revenue budget	Natural Environment Team	Ongoing
31	Awareness raising of nature and climate emergency	Raising awareness of these and the multifunctional benefits of GI in tackling the crises.	Create and maintain sustainable places	Council land	Access	North Somerset Council	Existing revenue budget	Natural Environment Team	Ongoing
32	Volunteering - engagement and activities	Continue to engage with communities in the management of open space/land for biodiversity - investigate introducing a Ranger service subject to funding	Health and wellbeing for all	Council land	Access	North Somerset Council	Existing revenue budget	Parks Team	Ongoing



Ref	Project name	Project summary	Main Objective	Main focus	Theme	Lead	Funding source	Lead Team	Timescale
33	Managing environmental record keeping in North Somerset and across the region	Investigate development of Council's own recording and data management service (GIS based) for recording notable fauna and flora, in order to help inform priorities for improving connectivity/ quality e.g. dormice and woodland connectivity. Work with regional parties to also consider a regional record centre	Health and wellbeing for all	Planning policy	Biodiversity	North Somerset Council	Grant funding will be required	Natural Environment Team	Medium term
34	Pesticide use reduction	Review council's pesticide usage and set target to reduce pesticide use by 2030.	Health and wellbeing for all	Council land	Biodiversity	North Somerset Council	Existing revenue budget	Parks Team	Short term
35	New orchard planting	Investigate areas for the creation of new community orchards and/or a Miyawaki/Tiny Forest on council land.	Health and wellbeing for all	Council land	Biodiversity	North Somerset Council	Grant funding will be required	Tree Team	Medium term



Ref	Project name	Project summary	Main Objective	Main focus	Theme	Lead	Funding source	Lead Team	Timescale
36	Review Natural capital valuation tools	Investigate Natural Capital valuation tools to help support decision making and investment in green space within North Somerset	Health and wellbeing for all	Council land	Access	North Somerset Council	Existing revenue budget	Natural Environment Team	Medium term
37	Engage with tourism and its interaction with GI	Continue to develop sustainable tourism offer linked to the natural environment in NS	Health and wellbeing for all	Third party land	Access	North Somerset Council	Existing revenue budget	PROW Team	Ongoing
38	Developer contribution update	Secure new GI provision and enhancement through CIL and S106 contributions, the priorities being the strategic GI corridors/assets and NRN.	Health and wellbeing for all	Planning policy	Access	North Somerset Council	Existing revenue budget	Natural Environment Team	Short term
39	Adopt Building for Nature standards for new development	Advocate/adopt Building with Nature Standards to ensure that GI is protected and enhanced as part of new development, from the design and master planning stage, through to delivery and management	Health and wellbeing for all	Planning policy	Access	North Somerset Council	Existing revenue budget	Natural Environment Team	Short term



Ref	Project name	Project summary	Main Objective	Main focus	Theme	Lead	Funding source	Lead Team	Timescale
40	Produce Biodiversity Net Gain policy	Produce clear local policy to ensure that BNG is achieved by all qualifying development	Health and wellbeing for all	Planning policy	Access	North Somerset Council	Existing revenue budget	Parks Team	Short term
41	Undertake an open space access assessment	Undertake an up to date open space assessment to ensure access to high quality and accessible open space	Health and wellbeing for all	Council land	Access	North Somerset Council	Existing revenue budget	Parks Team	Medium term
42	Investigate nitrate/phosphate off setting	Identify sensitive nitrate/phosphate receptor sites and zones of influence. Identify potential zones and sites for offsetting	Health and wellbeing for all	Planning policy	Access	North Somerset Council	Existing revenue budget	Parks Team	Medium term
43	Address gaps in PROW	Overlay PROW map with GI opportunity areas. Identify key gaps in the ROW network. Set a framework for creating links and access opportunities	Health and wellbeing for all	Council land	Access	North Somerset Council	Existing revenue budget, funding from Parish Councils, S106 funding	PROW Team	Short term



Ref	Project name	Project summary	Main Objective	Main focus	Theme	Lead	Funding source	Lead Team	Timescale
44	Wildlife friendly gardens	Promote and support wildlife friendly gardening within private gardens and school grounds; bird boxes/ hedgehog runs etc for new builds	Health and wellbeing for all	Council land	Access	North Somerset Council	Existing revenue budget	Parks Team	Ongoing
45	Support community groups with GI improvements	Engage with key community groups, parish council, voluntary sector and private sector organisations who would be able to deliver biodiversity enhancements within their land holdings.	Health and wellbeing for all	Council land	Access	North Somerset Council	Existing revenue budget	Parks Team	Ongoing
46	s106/CIL projects	To continue to develop and deliver projects funded by s106 and CIL and to prepare a pipeline of projects	Health and wellbeing for all	Council land	Access	North Somerset Council	s106/CIL	Parks Team	Ongoing
47	Infrastructure survey of parks and open spaces	To carry out a condition survey of parks an open spaces infrastructure	Health and wellbeing for all	Council land	Access	North Somerset Council	Existing revenue budget	Parks Team	Short term



Ref	Project name	Project summary	Main Objective	Main focus	Theme	Lead	Funding source	Lead Team	Timescale
48	National awards engagement	Seek appropriate awards to demonstrate high quality green infrastructure management of parks and open spaces e.g. Green Flag, in bloom etc	Health and wellbeing for all	Council land	Access	North Somerset Council	Existing revenue budget	Parks Team	Ongoing
49	Environment Land Management Scheme engagement	Identify ways in which to bring the Council's land under this scheme, where appropriate; and to support local landowners when possible	Health and wellbeing for all	Council land	Access	North Somerset Council	Existing revenue budget	Natural Environment Team	Medium term
50	Engagement with ROW Volunteers	To continue to identify projects which can be undertaken on the PROW Network by Woodspring Ramblers Association	Health and wellbeing for all	Council land	Access	North Somerset Council	Existing revenue budget	PROW Team	Ongoing
51	Engage with Active Travel Links programme	Support the Active Travel project by helping incorporate high quality GI	Health and wellbeing for all	Council land	Access	North Somerset Council	Highways funding	Natural Environment Team	Ongoing



Ref	Project name	Project summary	Main Objective	Main focus	Theme	Lead	Funding source	Lead Team	Timescale
52	Tree canopy increase	Investigate options for increasing tree canopy in North Somerset	Greater resilience to climate change	Council land	Biodiversity	North Somerset Council	Existing revenue budget	Tree Team	Long term
53	Parks improvement plan	Develop a strategy for our parks and play areas which reflects contemporary needs, enhances community engagement, considers new ways for delivery and raises more income	Health and wellbeing for all	Council land	Open space	North Somerset Council	Existing revenue budget	Parks Team	Short term
54	Iconic landscapes - iconic trees; protecting our levels and moors trees	This project will identify iconic levels and moors trees and will develop management programme to protect them for future generations	Create and maintain valued healthy landscape	Council land	Water	North Somerset Council	s106	Tree Team	Medium term



Ref	Project name	Project summary	Main Objective	Main focus	Theme	Lead	Funding source	Lead Team	Timescale
55	GI opportunities for water - improving the connectivity and quality of GI in North Somerset - see Appendix 4	The GI strategy highlights some specific issues and opportunities for improving blue GI, as well as existing projects, drawing on various sources including: existing Bristol Avon Catchment Partnership (BACP) projects, WFD water quality data, the Nature Recovery Network (NRN) and Environment Agency WWNP (Riparian Woodland Potential and Floodplain Woodland Planting Potential).	Greater resilience to climate change	Third party land	Water	Landowners working with a range of partners	A range of funding options	Flood Risk Team	Ongoing



Ref	Project name	Project summary	Main Objective	Main focus	Theme	Lead	Funding source	Lead Team	Timescale
56	GI opportunities for woodland - improving the connectivity and quality of GI in North Somerset - see Appendix 4	The GI strategy highlights some specific opportunities for improving the connectivity and quality of woodland habitat, drawing on various sources including SSSI condition assessment, NRN data (which utilised the Natural England Habitat Network1 dataset), as well as dormouse records	Improved and better-connected ecological networks	Third party land	Biodiversity	Landowners working with a range of partners	A range of funding options	Tree Team	Long term
57	GI opportunities for grassland - improving the connectivity and quality of GI in North Somerset - see Appendix 4	The GI strategy highlights some specific opportunities for improving the connectivity and quality of grassland habitat, drawing on various sources including SSSI condition assessment, NRN data (which utilised the Natural England Habitat Network mapping2) and the strategic GI corridors developed as part of this strategy.	Improved and better-connected ecological networks	Third party land	Biodiversity	Landowners working with a range of partners	A range of funding options	Parks Team	





The information in this summary document has been drawn from a much wider piece of work that includes the data which underpins the maps shown in this summary; a more detailed analysis of North Somerset's GI; and wide ranging information about GI in general. It is the detailed report that will underpin the way the Council manages GI across North Somerset.

[View document >](#)



This publication is available in large print, Braille or audio formats on request.
Help is also available for people who require council information in languages other than English.

Please contact 01934 426 775

